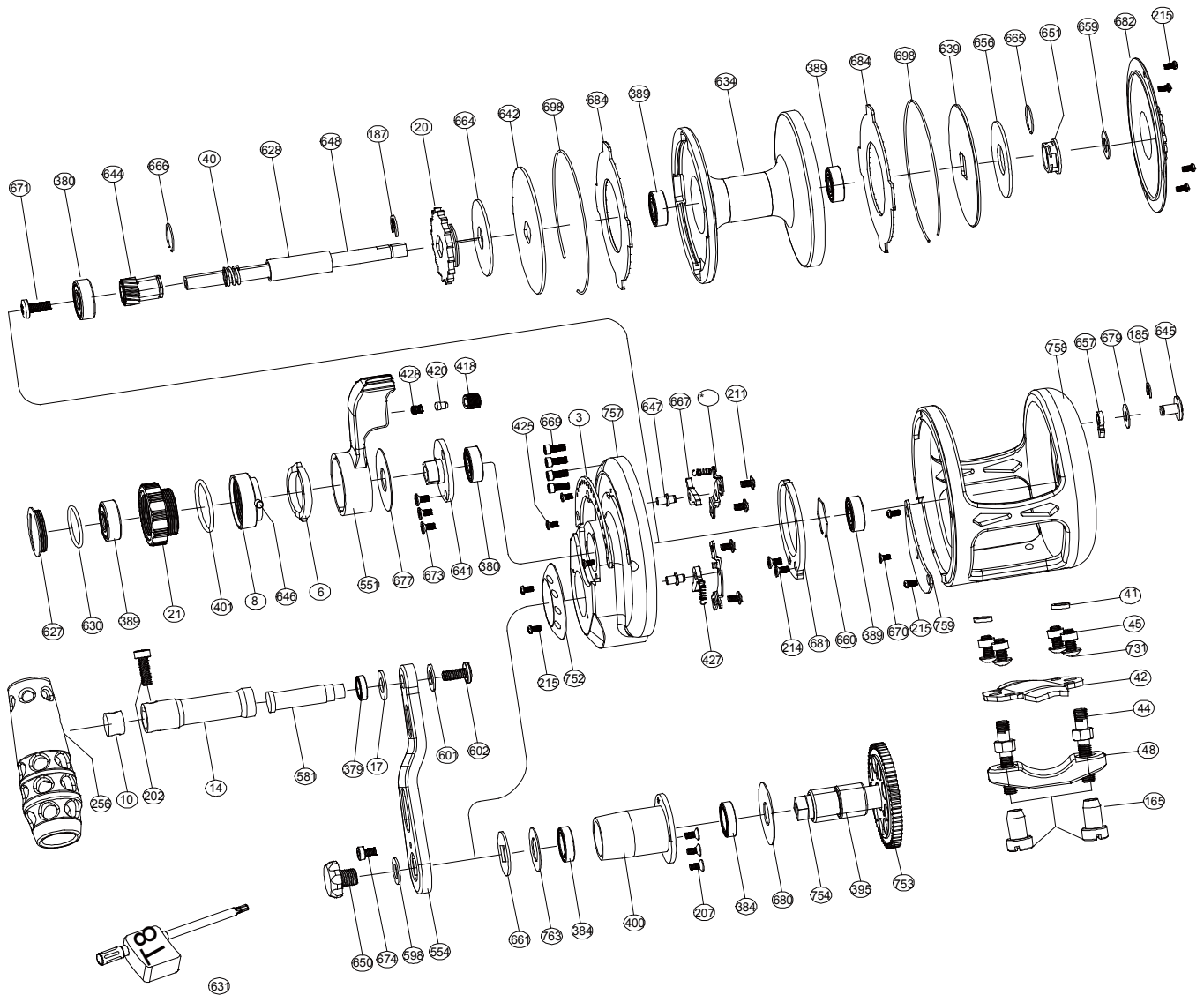


Sealion Series Lefty Dual Drag Jigging Reel

OSL06DHL



No.	PARTS NAME	No.	PARTS NAME	No.	PARTS NAME
3	Embedded clip	400	Drive shaft coat	657	Alarm sound gear
6	Pre-program plate	401	"O" ring	658	Close cover
8	Pre-program key	418	Sound coat	659	Drag plate washer
10	Handle shaft retainer	420	Sound nail	660	Bearing ring
14	Handle shaft coat	425	Screw embedded clip	661	Handle washer
17	Washer 2	427	Stopping stock spring	664	Spool spring washer
20	Anti-reverse ratchet	428	Sound nail spring	665	Big ring
21	Drag tension knob	551	Drag control lever	666	Small ring
40	Spool shaft spring	554	Handle arm	667	Anti-reverse dog
41	Reel foot cannulation 1	581	T handle nail	669	Side plate screws
42	Reel foot	598	Handle bolt washer	670	Close cover screws
44	Fixed screws	601	Washer 3	671	Spool shaft screw
45	Reel foot cannulation	602	Handle knob screw 2	673	Screw for bearing cover
48	Rod clamp	627	Drag knob cover	674	Anti-loose screw
165	Fixed nuts	628	Spool cannulation	677	Drag control lever washer
185	"E" washer	630	"O" ring	679	Washer 1
187	"E" washer	631	Wrench	680	Drive shaft coat washer
191	Set plate	634	Spool	681	Alert ratchet
202	Handle knob screw 1	639	Rear drag plate	682	Cover
207	Push slice screw	641	Bearing cover	684	Drag plate
211	Set plate screws	642	Front drag plate	698	Spool ring
214	Alert ratchet screws	644	High speed pinion gear	731	Reel foot screws
215	Cover screw	645	Strike alert lever	752	Drive shield
256	Handle knob	646	Pre-program key pin	753	Drive gear-high speed
379	Ball bearing (S117)	647	Set plate nail	754	Drive shaft
380	Ball bearing (S605)	648	Spool shaft	757	Right plate
384	Ball bearing (S6700)	650	Handle bolt	758	Frame
389	Ball bearing (S695)	651	Drag plate undersleeve	759	Close cover
395	One-way bearing	656	Spool spring washer	763	Drive shaft washer